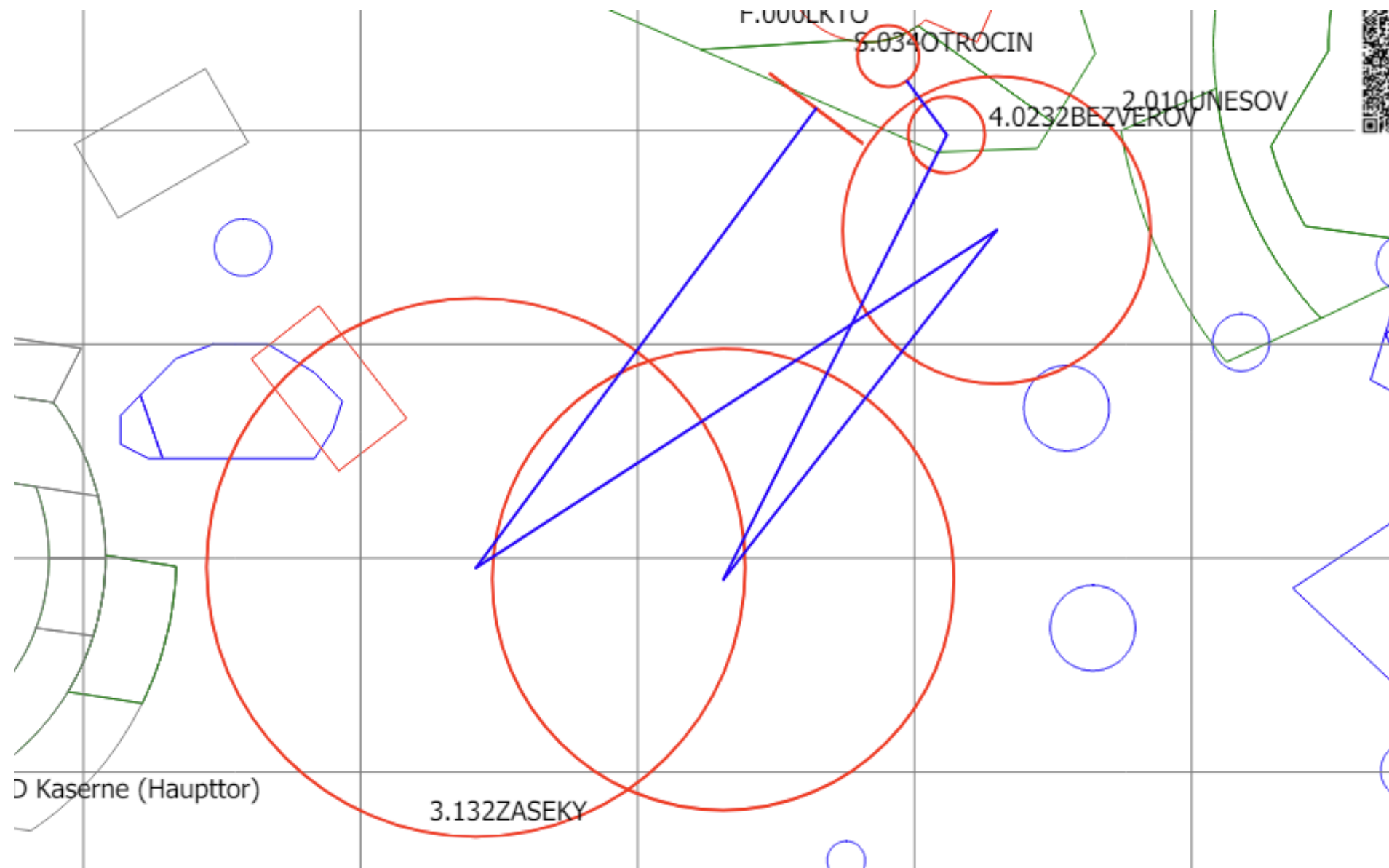




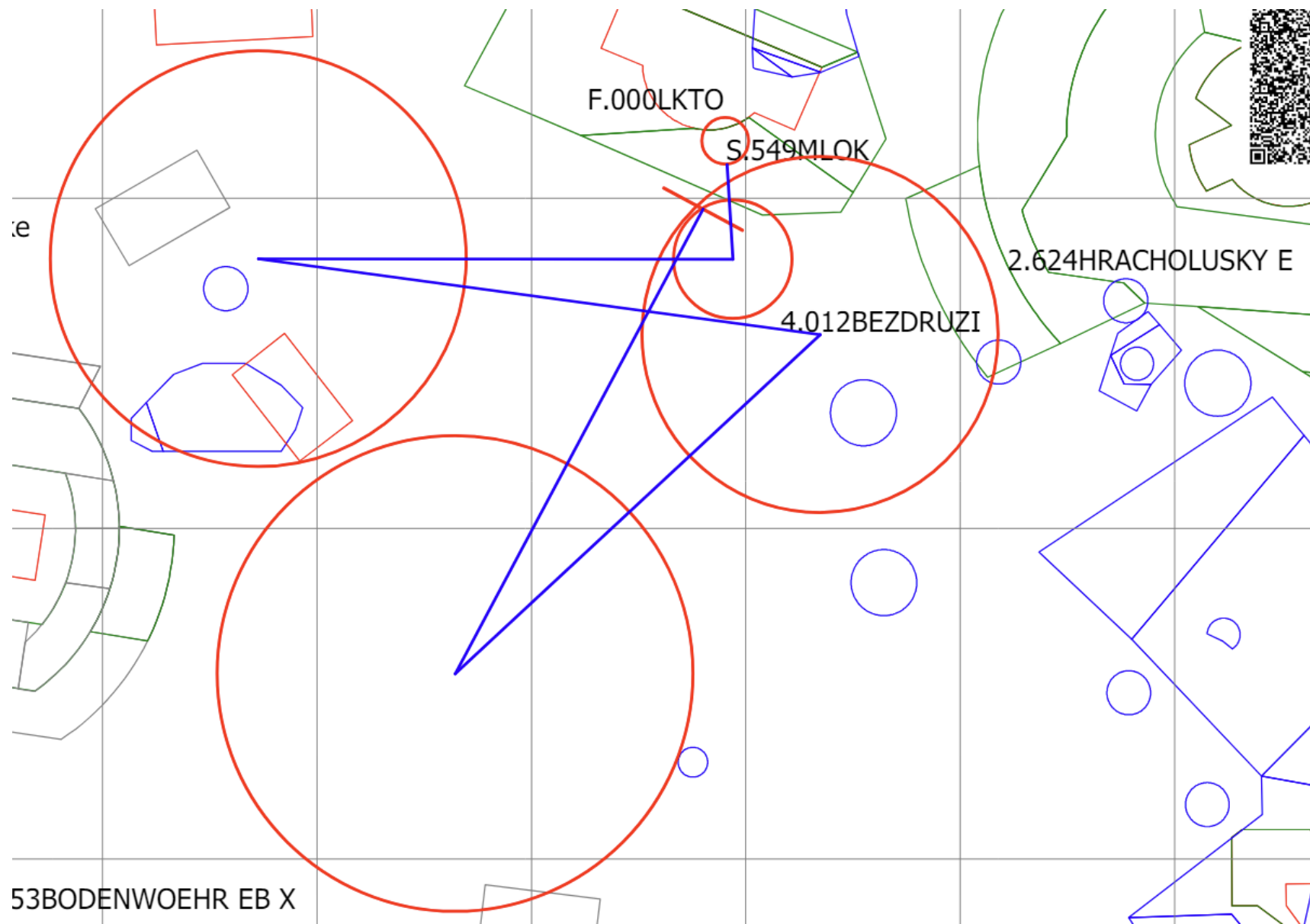
DAILY BRIEFING

COMPETITION DAY 8 – 16/06/2024

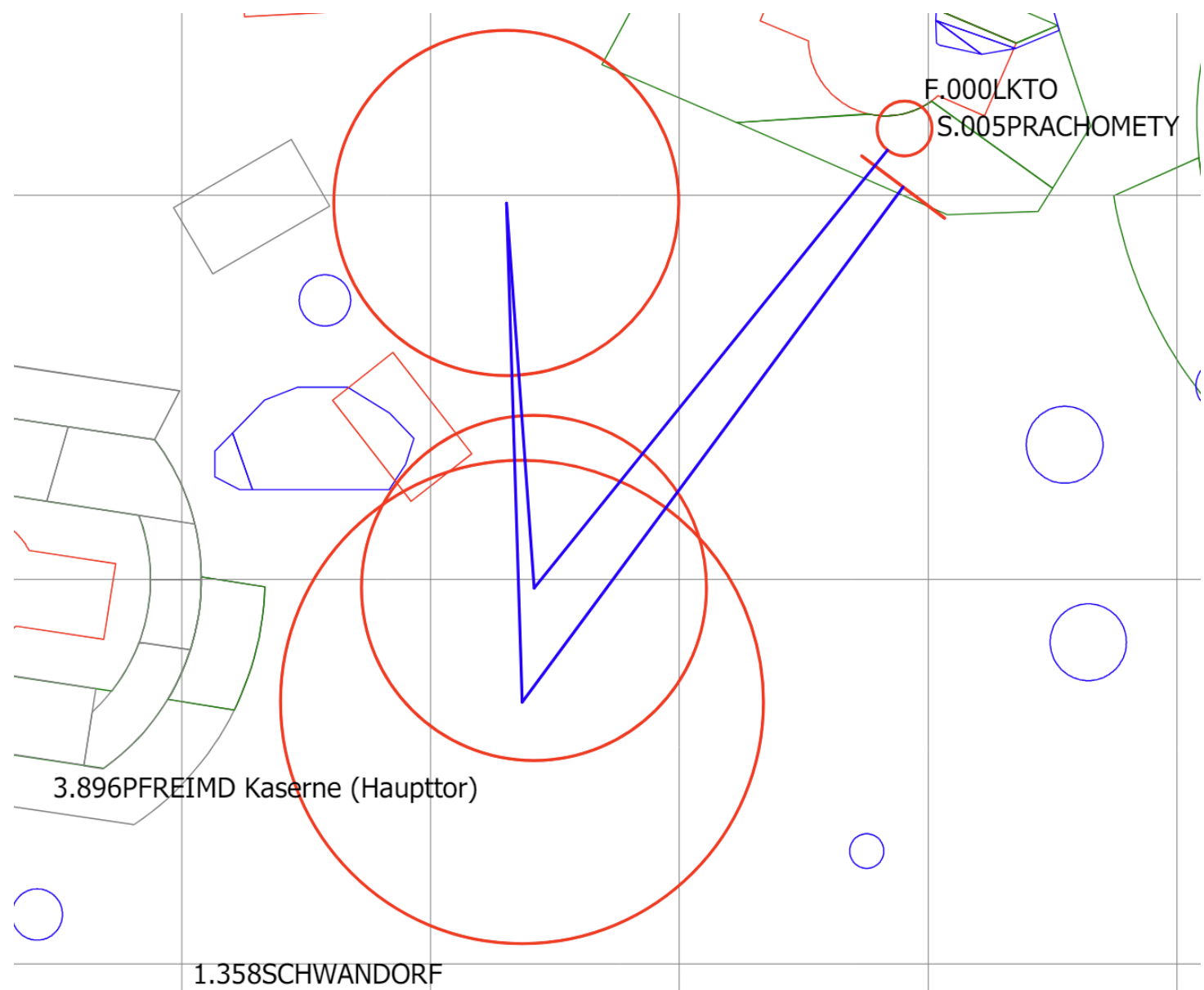
TASK CLUB



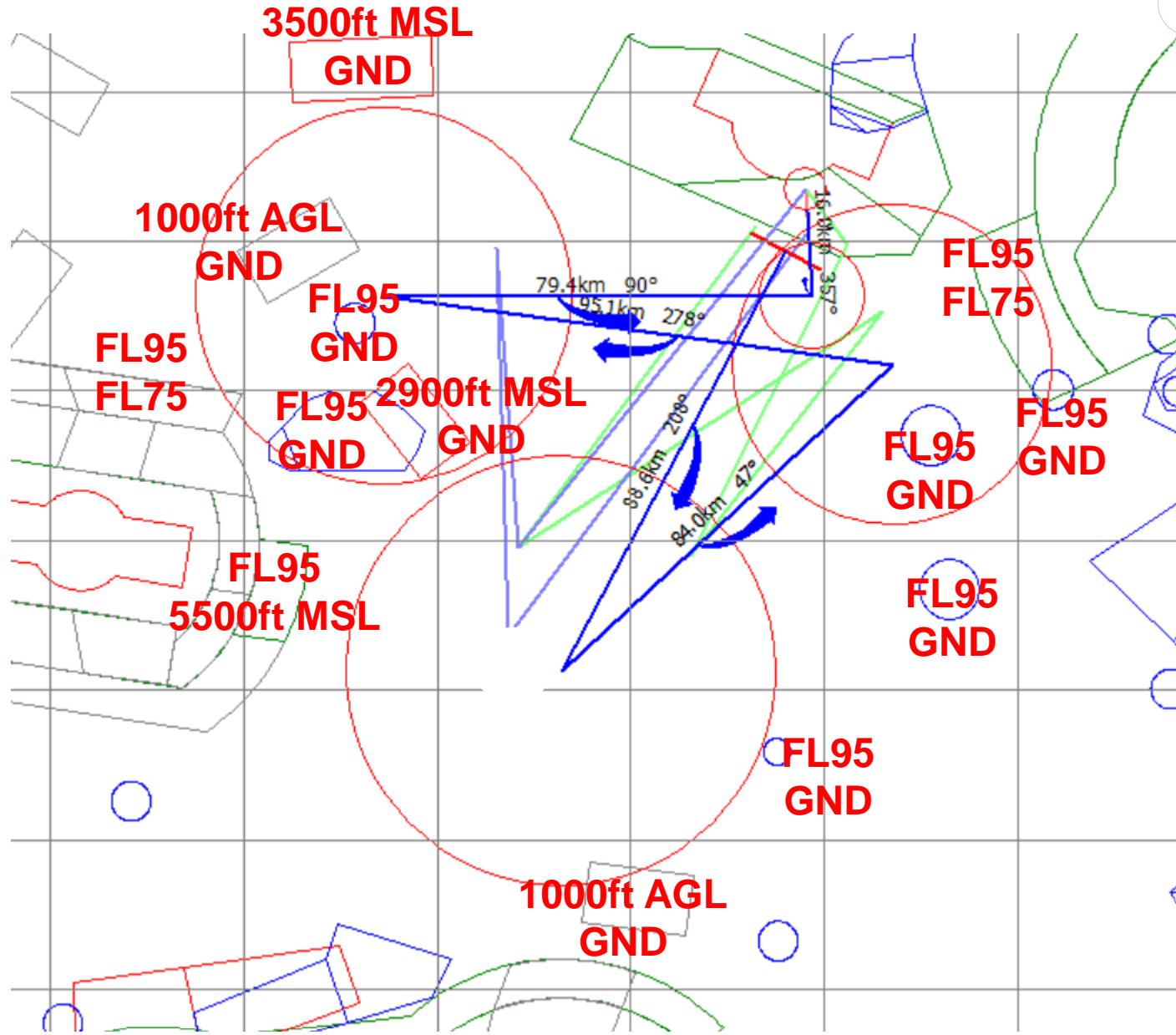
TASK 15M



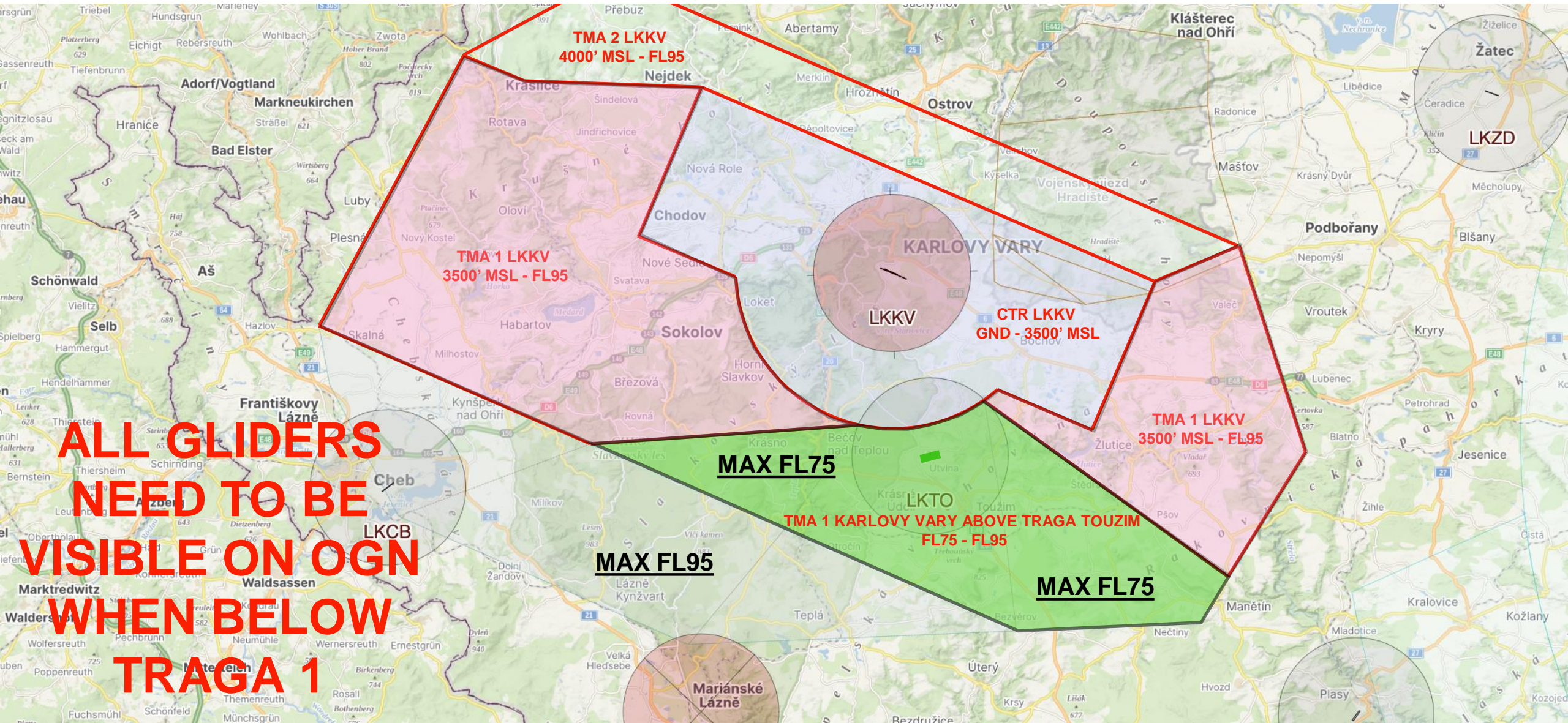
TASK OPEN



AIRSPACE



AIRSPACE

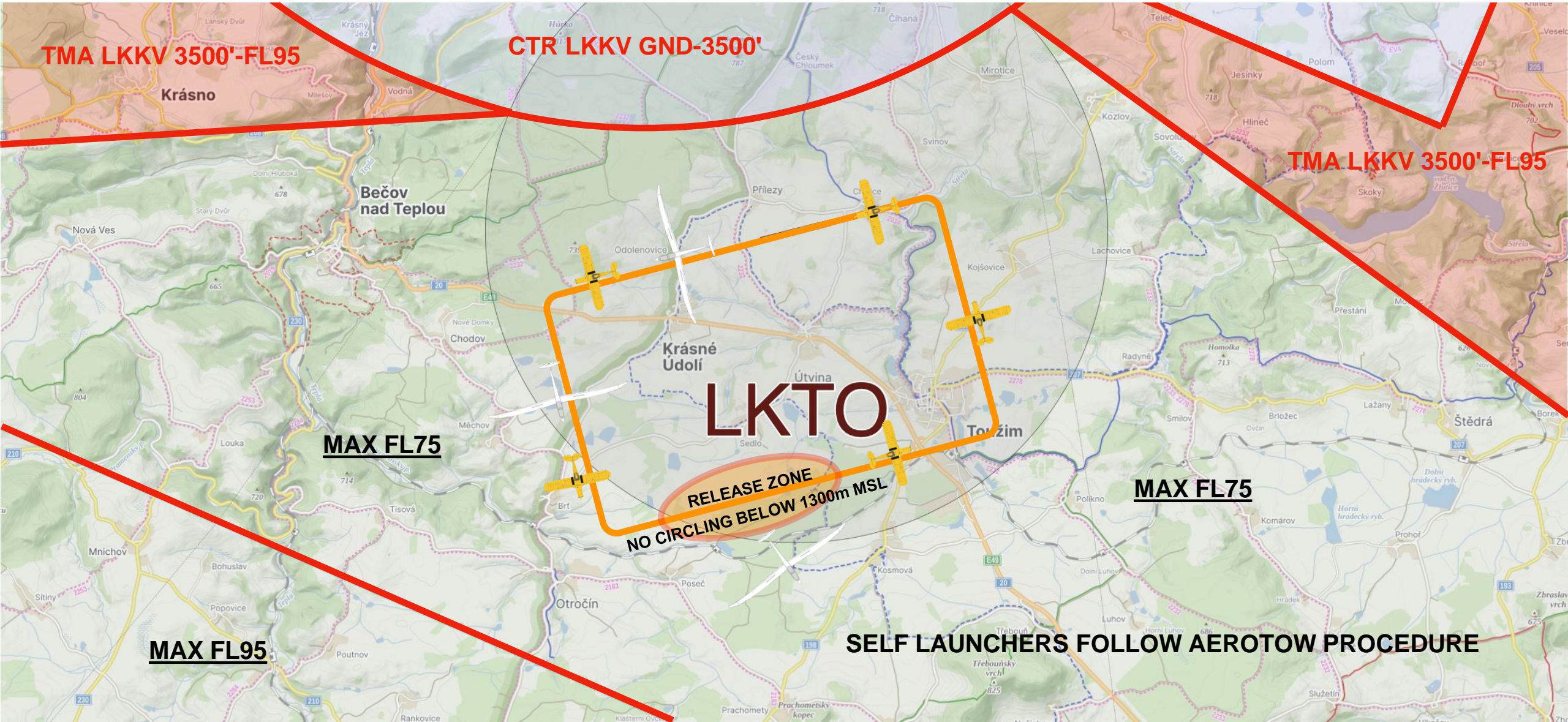


**ALL GLIDERS
NEED TO BE
VISIBLE ON OGN
WHEN BELOW
TRAGA 1**

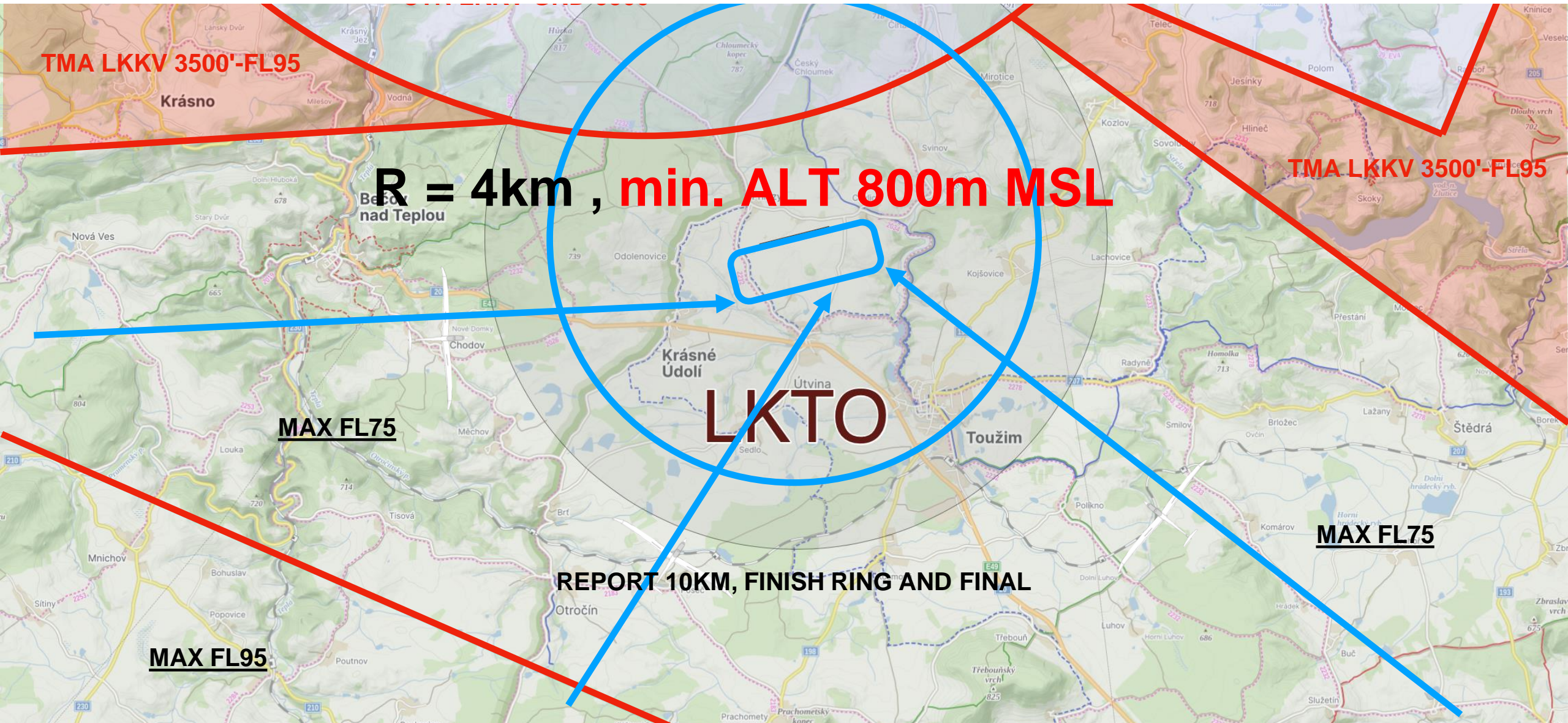
TAKE-OFF RWY 26



TAKE-OFF RWY 26



FINISH RWY 26



TMA LKKV 3500'-FL95

Krásno

R = 4km , min. ALT 800m MSL

TMA LKKV 3500'-FL95

Bečín nad Teplou

LKTO

MAX FL75

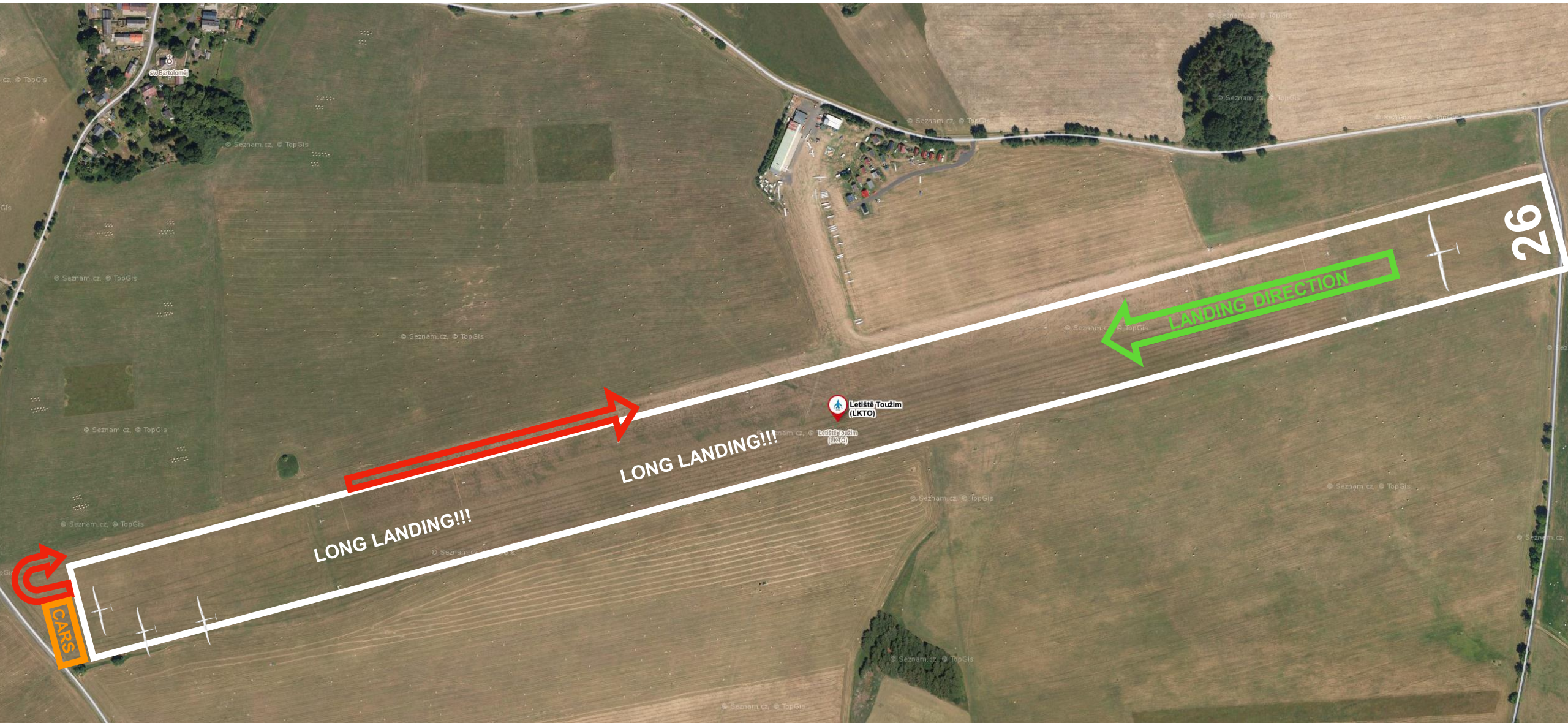
Toužim

MAX FL75

REPORT 10KM, FINISH RING AND FINAL

MAX FL95

LANDING RWY 26



ENERGY CONTROL



- MAXIMUM START ALTITUDE –
2000m MSL

- MAXIMUM START GROUNDSPEED –
170 km/h

PEV START



- NOT IN USE TODAY

INFORMATION FOR TODAY



- START LINE WILL OPEN 30 MINUTES
AFTER LAST LAUNCH IN CLASS

FILE DELIVERY



- SEND ALL FILES TO IGC@POHODA.COM
- 45 MINUTES FOR FILE DELIVERY
- **INCLUDE CN IN EMAIL SUBJECT**
- 1 SECOND FIX RATE
- ENSURE CORRECT FILE HEADER

INFORMATION FOR TODAY



- RUNWAY IN USE: 26
- FIRST LAUNCH: 12:00
- COMPETITION FREQ: 130.340

QUESTIONS?



CZECH **GLIDING** CHAMPIONSHIP

TOUŽIM | 2024



Řízení letového provozu
České republiky



FLOWBOX

SUAS



GROUP



Credo.

eclipse.



LPW



NÁRODNÍ
SPORTOVNÍ
AGENTURA



oskarkilo.eu

La Lorraine
Pečení je naše vášně

VeraGourmet

