



INTRO BRIEFING

08/06/2024

ORGANISING TEAM



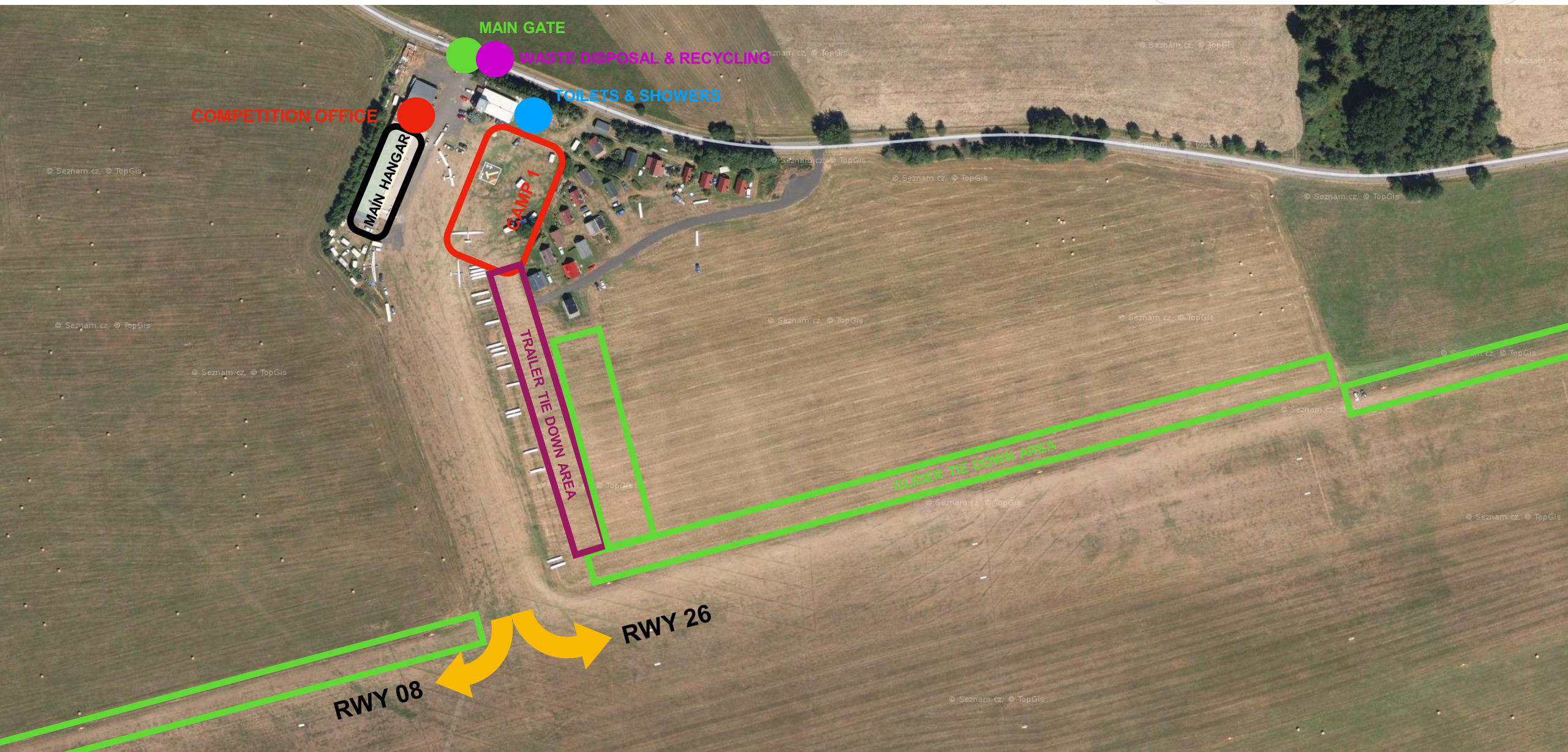
- COMPETITION DIRECTOR: Matěj Rendla
- AERoclub PRESIDENT: Petr Jiránek
- SCORER: Hynek Chovan
- METEO: Ivan Harašta & Jan Horák (Remote)
- TASK SETTING: Ivan Harašta (Club), Karel Beníšek (Open), Jan Pavlík (15M), Tomáš Rendla (Airspace Coordination)

ORGANISING TEAM



- OPERATIONS DIRECTOR: Jan “Muky” Muknšnábl
- TOWER: Václav “Mečoun” Mečíř

AIRFIELD FACILITIES



PARKING

PARKING

DO NOT DRIVE INTO CAMP
IF NOT NECESSARY

CAMP 1

TRAILER TIE-DOWN AREA

GLIDER TIE-DOWN AREA



GLIDER TIE-DOWN



**PLEASE MOVE TRAILERS
OUTSIDE OF TWY TOMORROW
MORNING**



GLIDER TIE-DOWN

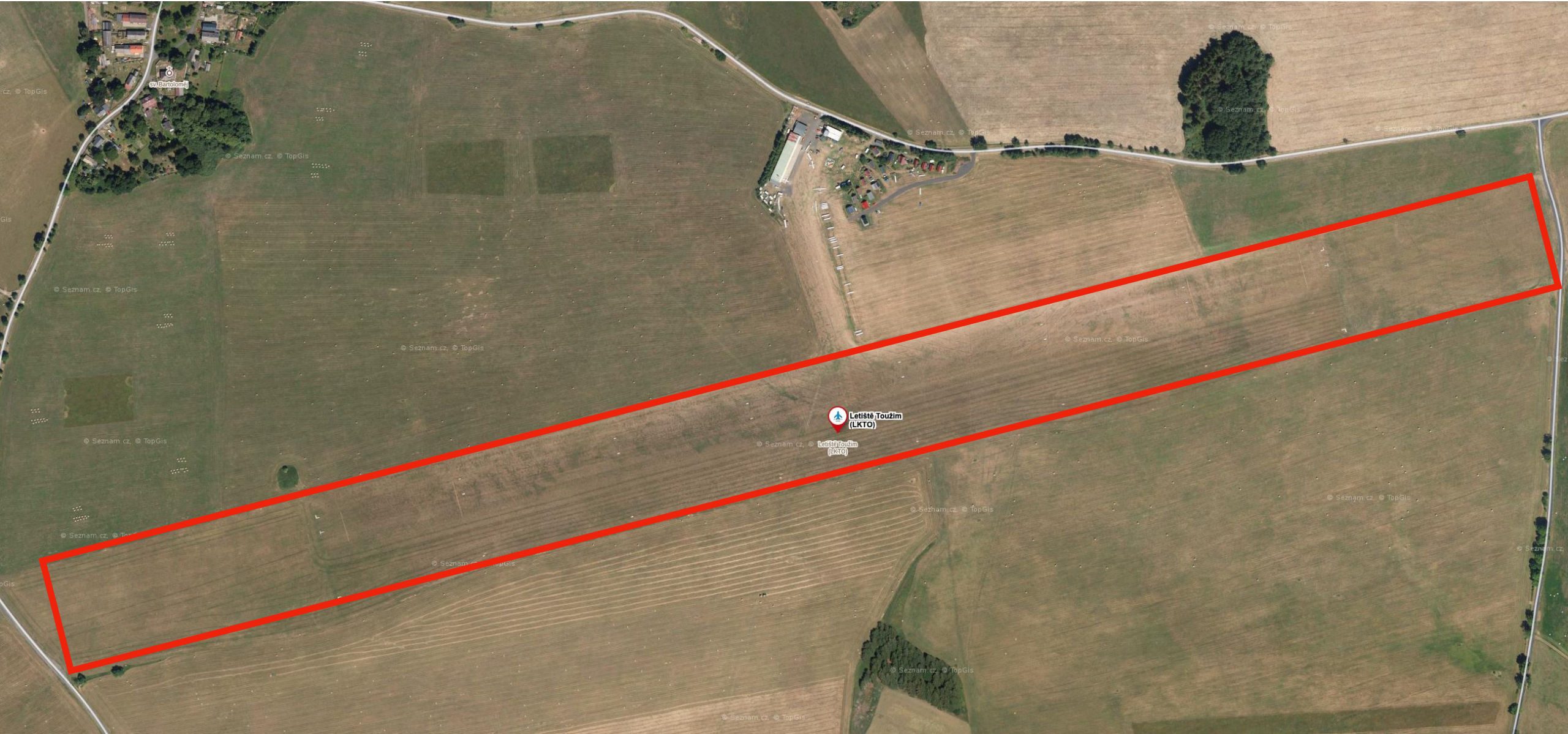


GLIDER TIE-DOWN

**REMOVE THESE TRAILES AND
GLIDERS TOMORROW**



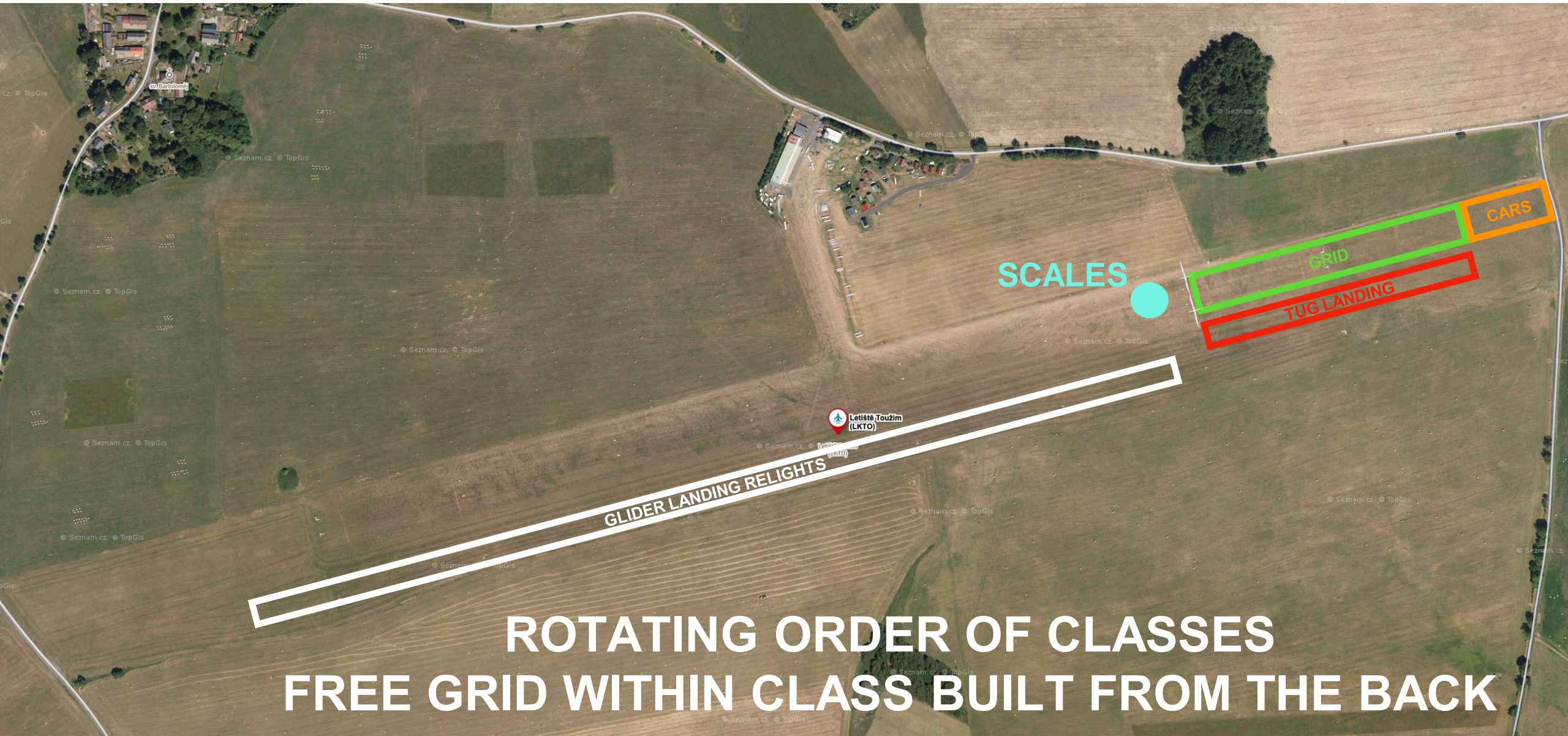
CONTEST SITE BOUNDARY



RWY DIMENSIONS



TAKE-OFF RWY 26



**ROTATING ORDER OF CLASSES
FREE GRID WITHIN CLASS BUILT FROM THE BACK**

GRID



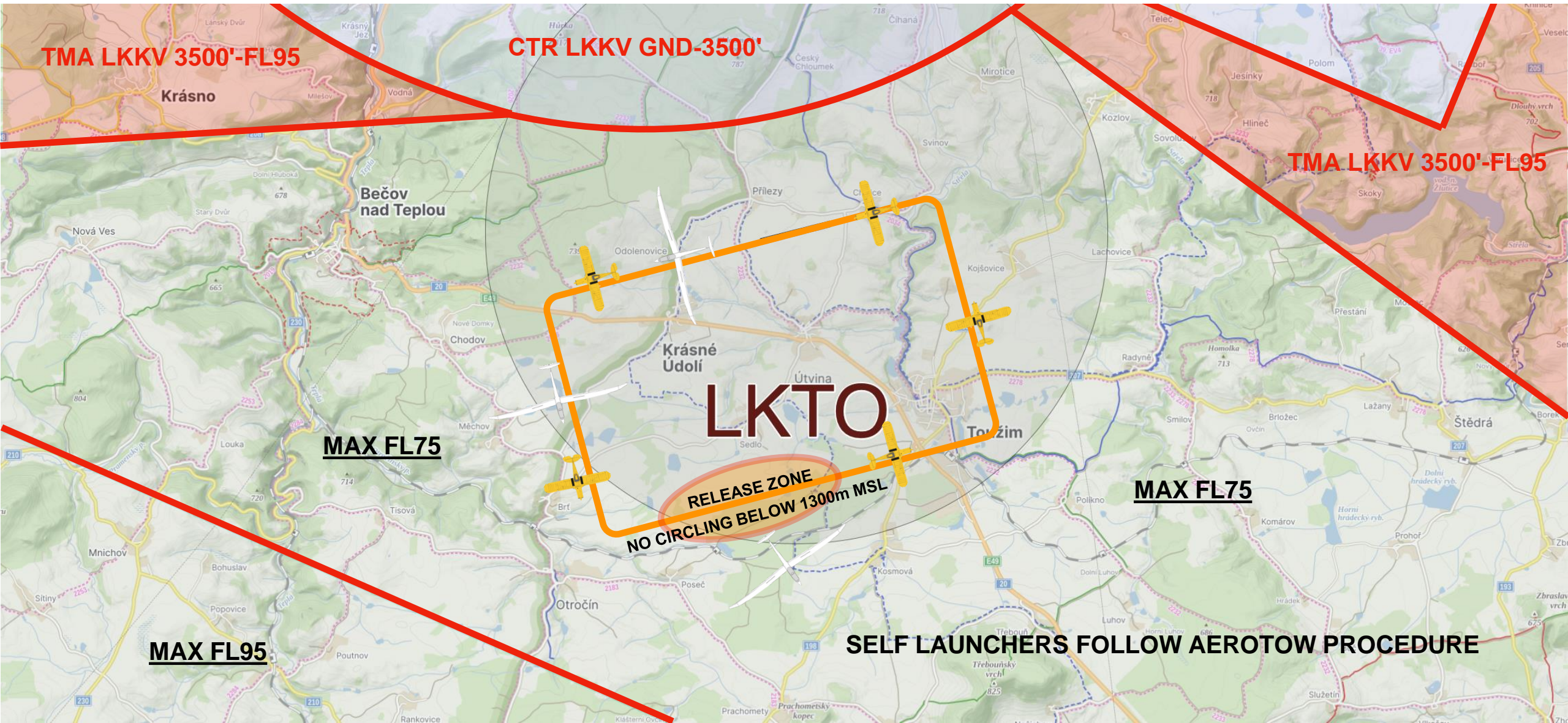
- FREE ORDER
- TWO IN ROW
- NO OVERLAPPING WINGS
- FIRST IN CLASS STARTS FROM CONES AND OTHERS STAND IN FRONT OF THEM

WEIGHING PROCEDURE



- RANDOM WEIGHING IN ALL CLASSES
- TOLERANCE \pm 10 KG
- PENALISATION ACCORDING TO ANNEX A
- COMBI CLASSES ONLY PENALISED FOR OVERWEIGHT
- POSSIBILITY OF REPEATED WEIGHING TO MINIMISE EFFECT OF WIND AND RAIN

TAKE-OFF RWY 26



TMA LKKV 3500'-FL95

CTR LKKV GND-3500'

TMA LKKV 3500'-FL95

MAX FL75

LKTO

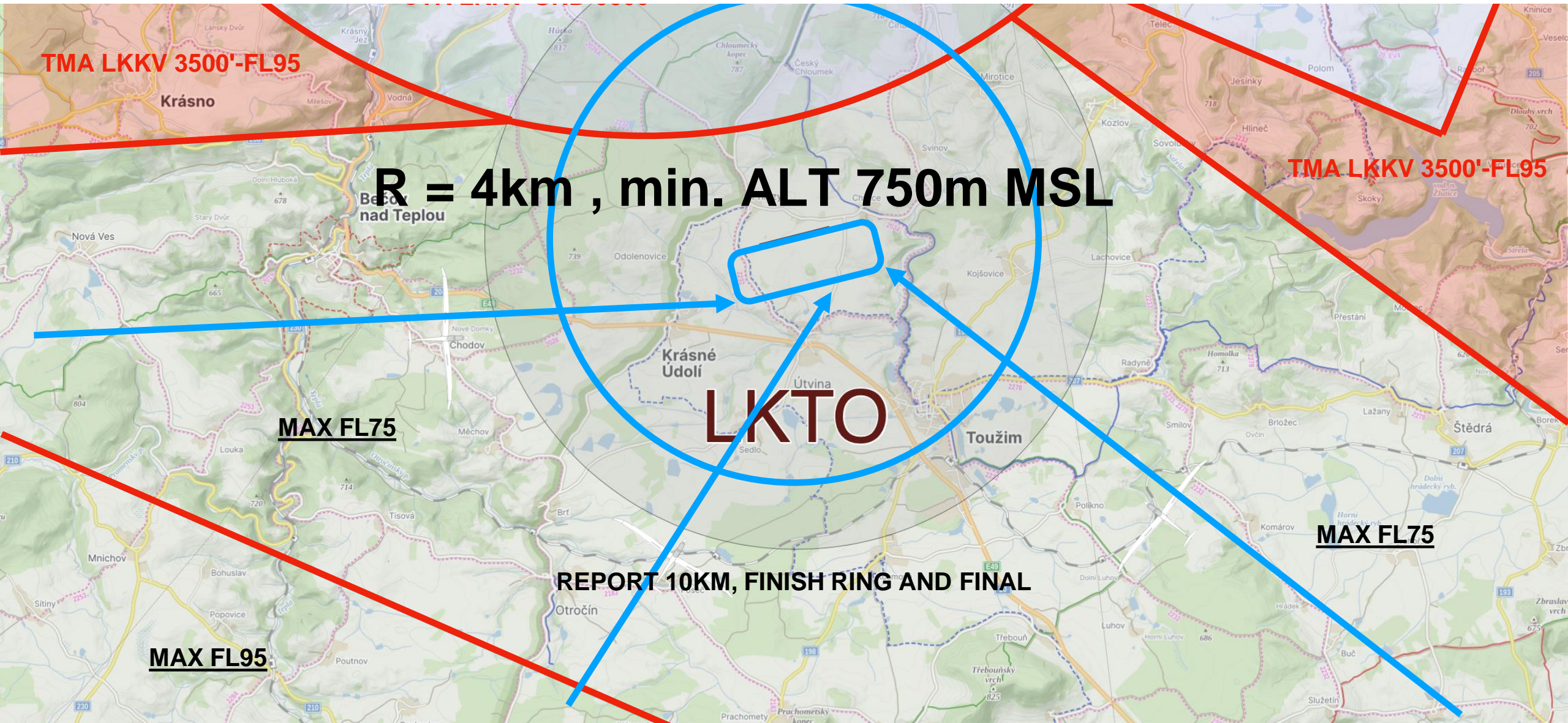
RELEASE ZONE
NO CIRCLING BELOW 1300m MSL

MAX FL75

MAX FL95

SELF LAUNCHERS FOLLOW AEROTOW PROCEDURE

FINISH RWY 26

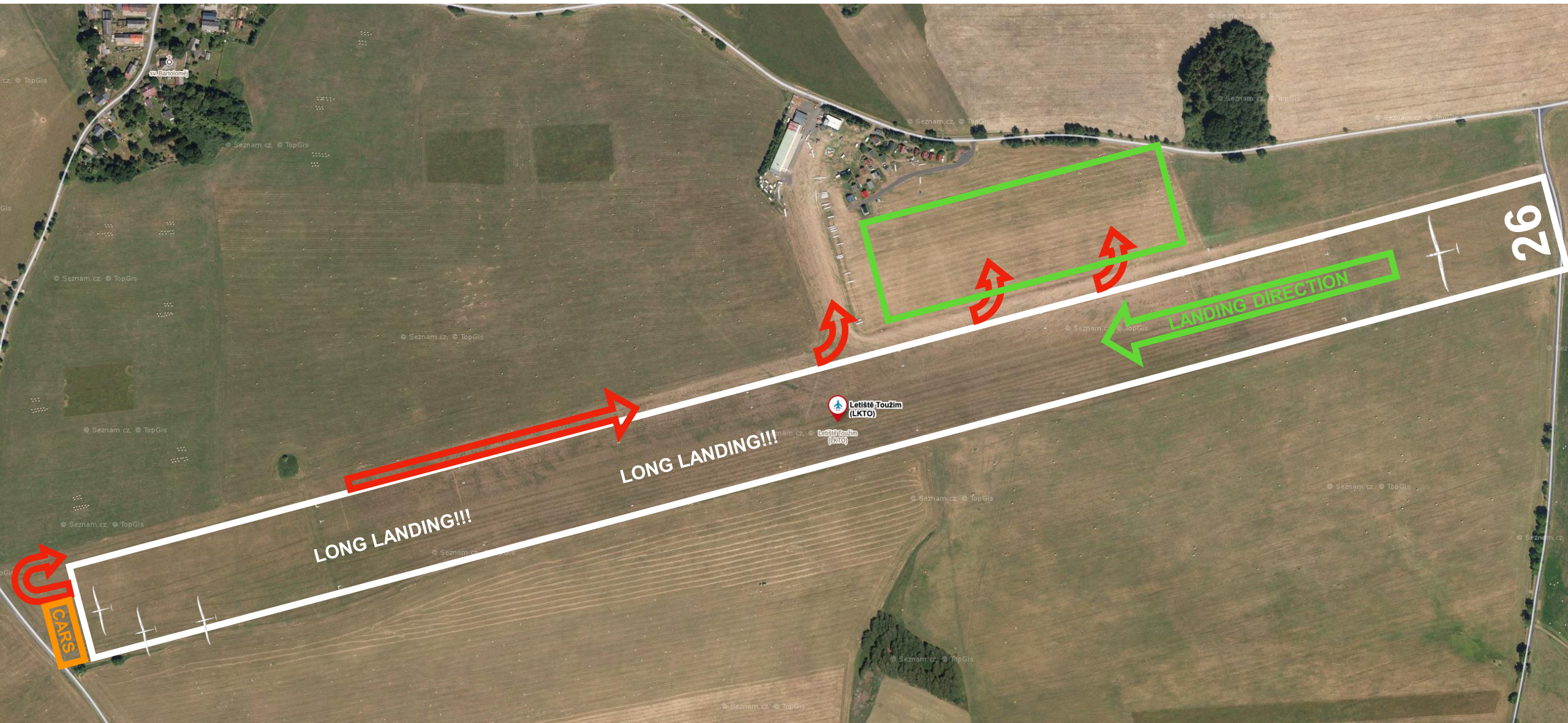


REPORTING ARRIVAL

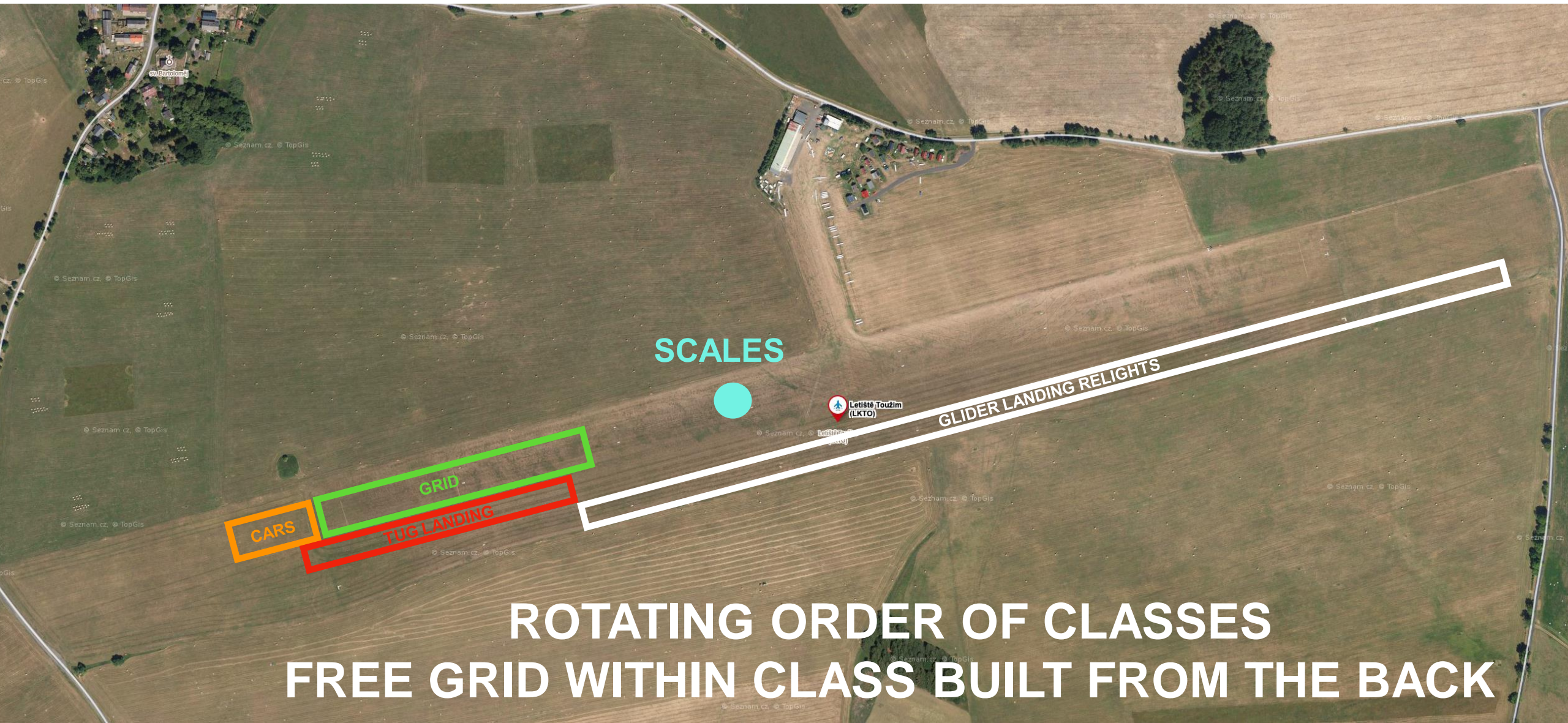


- CALL AT 10 KM, CROSSING FINISH RING AND FINAL
- 1st CALL: (Competition Number), 10K
- 2nd CALL: (CN), ON RING, JOINING (CIRCUIT POSITION)
- 3rd CALL: (CN), FINAL, (NORTH/SOUTH SIDE etc.)

LANDING RWY 26

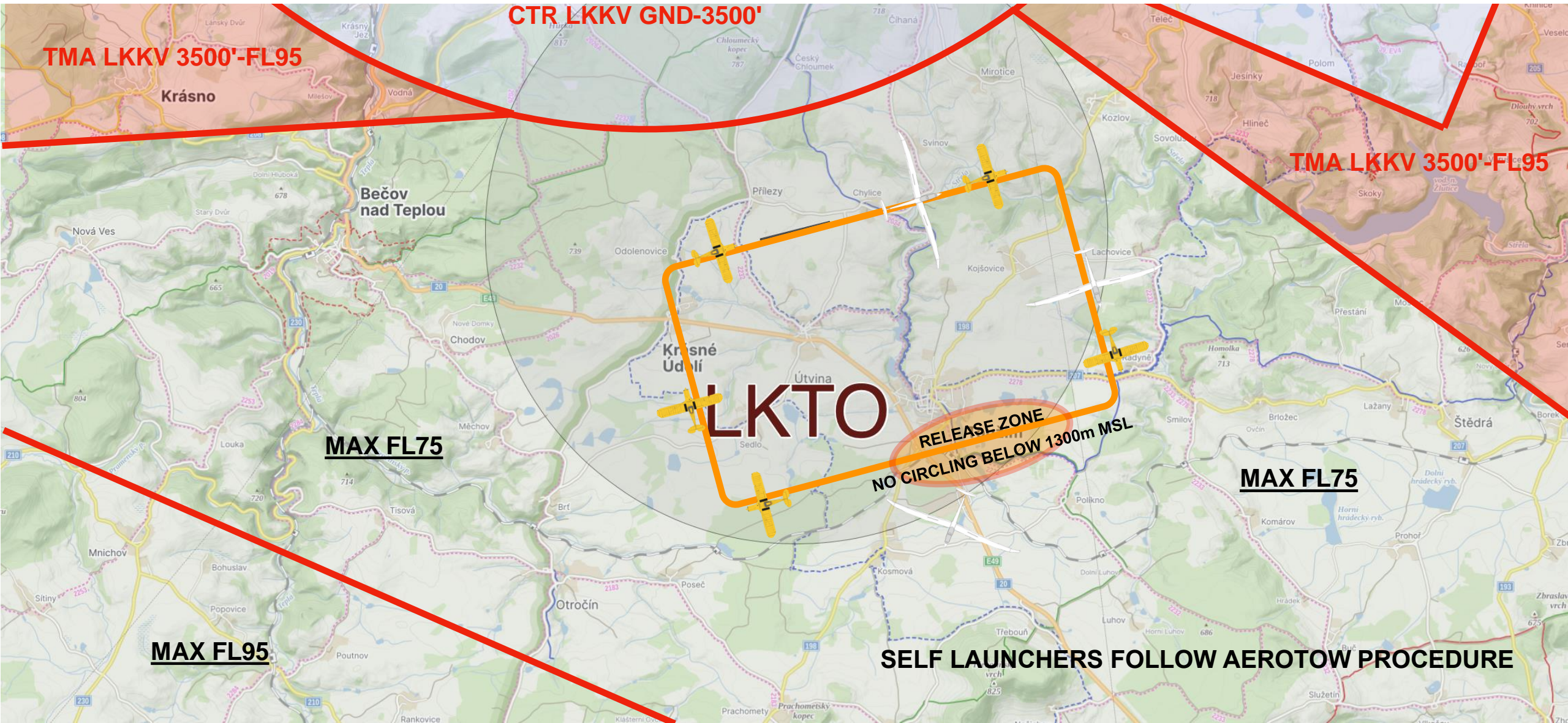


TAKE-OFF RWY 08

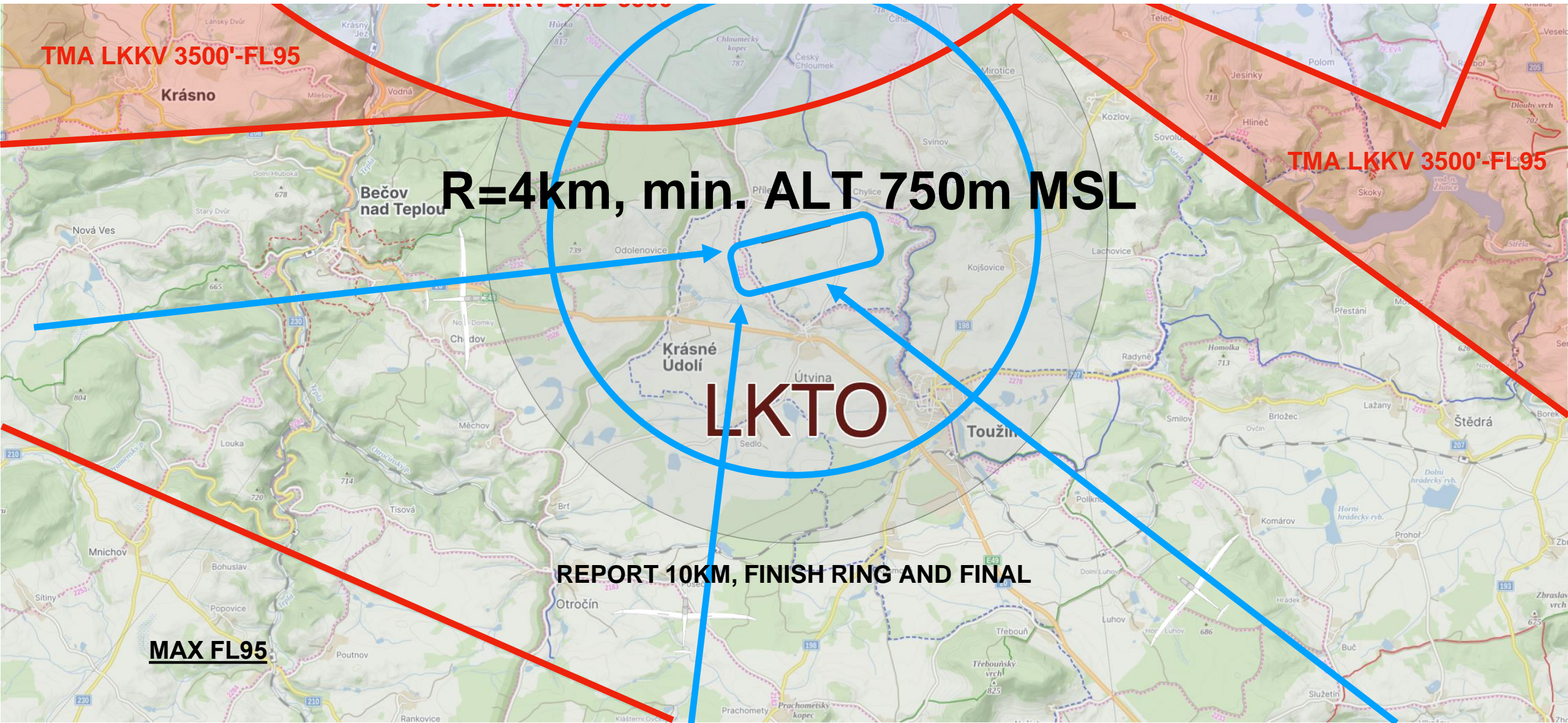


**ROTATING ORDER OF CLASSES
FREE GRID WITHIN CLASS BUILT FROM THE BACK**

TAKE-OFF RWY 08



FINISH RWY 08



TMA LKKV 3500'-FL95

TMA LKKV 3500'-FL95

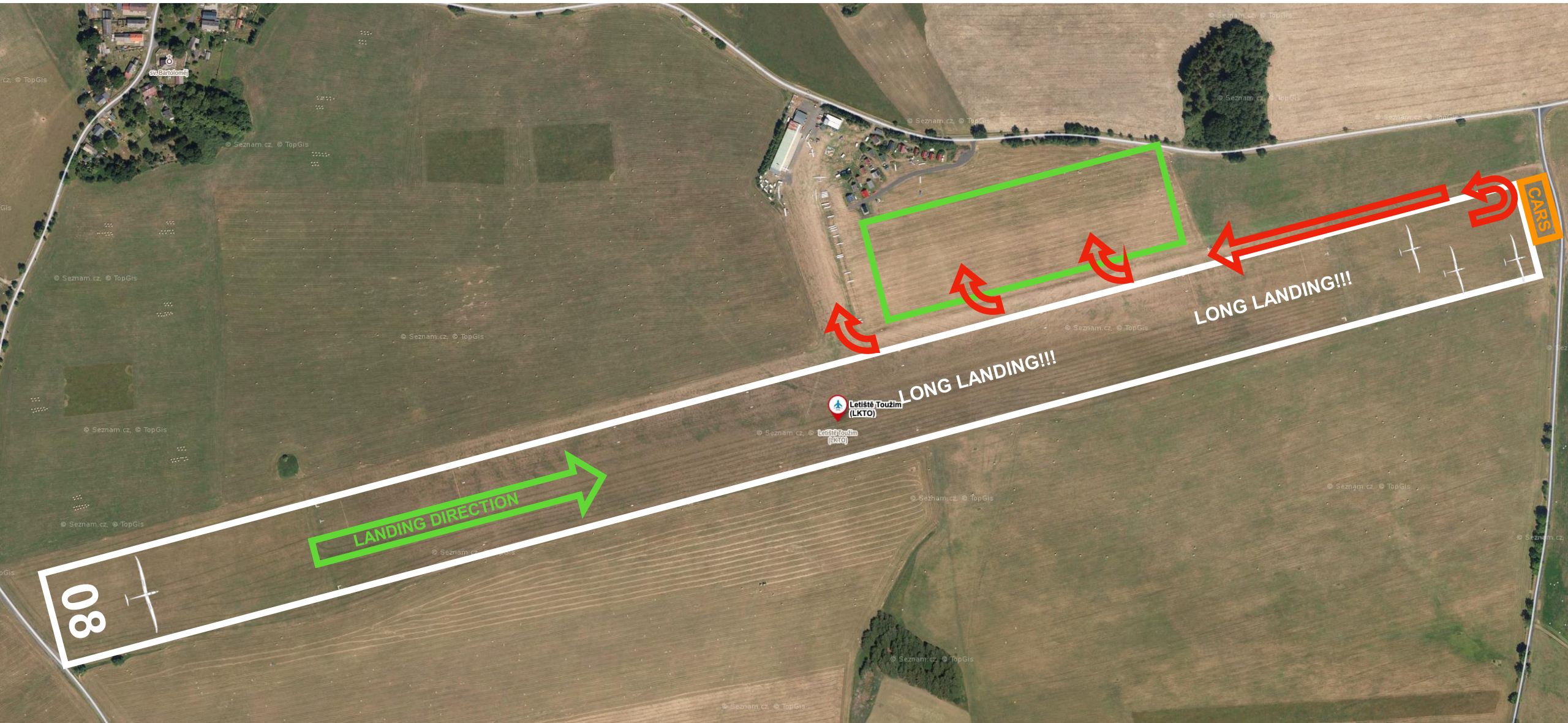
R=4km, min. ALT 750m MSL

LKTO

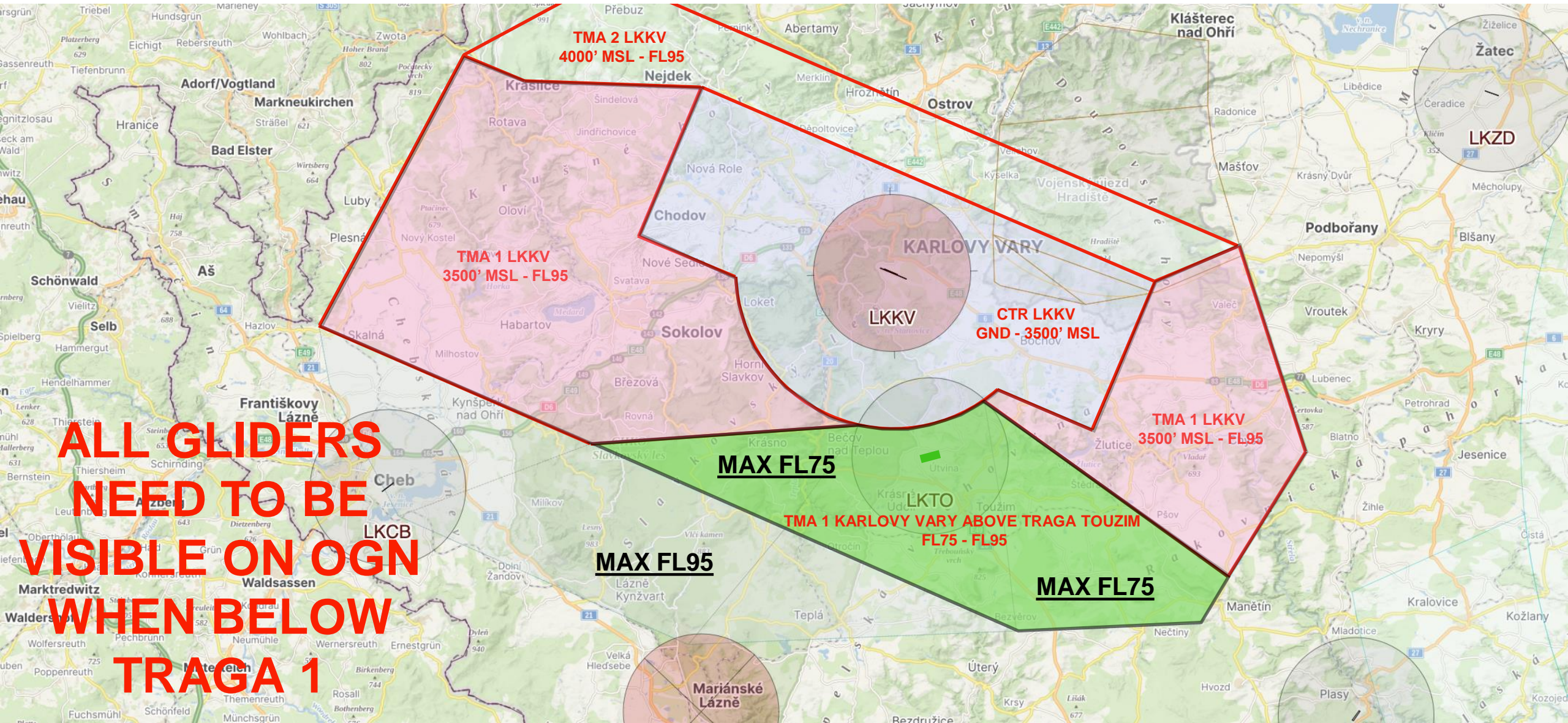
MAX FL95

REPORT 10KM, FINISH RING AND FINAL

LANDING RWY 08



AIRSPACE



TMA 2 LKKV
4000' MSL - FL95

TMA 1 LKKV
3500' MSL - FL95

LKKV

CTR LKKV
GND - 3500' MSL

TMA 1 LKKV
3500' MSL - FL95

MAX FL75

TMA 1 KARLOVY VARY ABOVE TRAGA TOUŽIM
FL75 - FL95

MAX FL95

MAX FL75

**ALL GLIDERS
NEED TO BE
VISIBLE ON OGN
WHEN BELOW
TRAGA 1**

**Mariánské
Lázně**

TASK AREA ALTITUDE LIMIT



- **FL 95** IN ALL COUNTRIES

ENERGY CONTROL



- MAXIMUM START ALTITUDE –
2000m MSL

- MAXIMUM START GROUNDSPEED –
170 km/h

PEV START



- PEV WAIT TIME: 8 MINUTES
- PEV START WINDOW: 5 MINUTES
- MAX NUMBER OF STARTS: 3

START LINE OPENING



- START LINE WILL OPEN 30 MINUTES
AFTER LAST LAUNCH IN CLASS
- COMPETITION FREQUENCY 130.340

FREQUENCIES



Pro soutěž byly zkoordinovány kmitočtové kanály pro „air to air“ komunikaci. Soutěžící piloti musí při vzájemné komunikaci využívat výhradně tyto kmitočty. Přidělení jednotlivých frekvencí bude provedeno pořadatelem po rozdělení soutěžících do skupin.

Provoz na kmitočtu musí být prováděn v souladu s platnými předpisy. Technické parametry musí být dodrženy podle požadavku leteckého předpisu L10 o civilní letecké telekomunikační službě a platného znění Radiokomunikačního řádu.

FREQUENCIES



Designated frequencies for air to air communication have been coordinated for the competition. All competing pilots must only use these frequencies for communication as assigned by the organizer.

Use of these frequencies must be carried out in accordance with all applicable regulations. The technical parameters must be complied with in accordance with the requirements of the Czech aeronautical regulation L10 on civil aeronautical telecommunication service and the current version of the Radio-communication Regulations.

FILE DELIVERY



- SEND ALL FILES TO IGC@POHODA.COM
- 45 MINUTES FOR FILE DELIVERY
- **TEST ENGINE DURING FIRST FLIGHT**
- INCLUDE CN IN EMAIL SUBJECT
- 1 SECOND FIX
- ENSURE CORRECT FILE HEADER

ENGINE TEST



- WITHIN 5 MINUTES AFTER RELEASE
- MAXIMUM RUN TIME OF 2 MINUTES
- WITHIN 5.5 KM FROM THE AIRFIELD
(000LKTO)

OUTLANDING REPORT



- WhatsApp MESSAGE TO CD WITH COMPETITION NUMBER AND LOCATION/COORDINATES
- FERRY FLIGHTS AVAILABE, CALL PETR JIRÁNEK (NUMBER ON TASK SHEET)

HANDICAPS



- CHECK YOUR HANDICAPS

SCORING HOURS



- END OF SCORING HOURS 22:00

OFFICIAL COMMUNICATION



- OFFICIAL WHATSAPP GROUP FOR ALL COMPETITION RELATED INFORMATION
- DAILY MESSAGE AT 8:00
- UNOFFICIAL GROUP FOR COMMUNICATION BETWEEN PILOTS

FOOD



- BREAKFAST 8:00 - 9:30
- DINNER 17:00 – 19:00
- DRINKS AT BAR TILL 23:00

SECURITY



- SECURITY WILL BE PRESENT
- PLEASE WEAR WRISTBANDS
- MORE WRISTBANDS FOR CREW
AND FAMILY IN THE OFFICE

SAFETY



- WET GROUND
- SHORT GROUND ROLLS
- LONG LANDINGS !!!

SAFETY



- OUTLANDINGS

- WET FIELDS

- HIGH CROPS

- HARD TO SEE WIRES

SAFETY



- ARRIVALS

- HIGHEST AIRFIELD IN CZE

- LOT OF HILLS AND FORESTS

- LEAVE ENOUGH RESERVE

SAFETY



- ARRIVALS

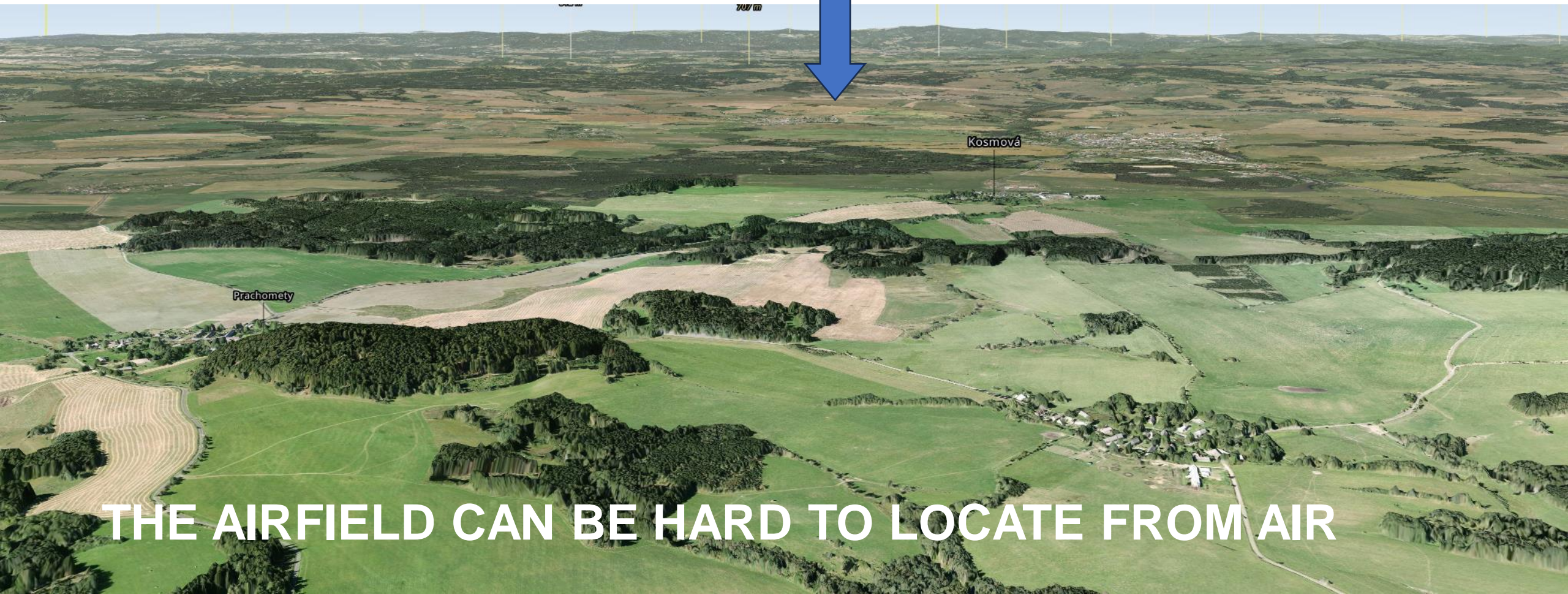


THE AIRFIELD CAN BE HARD TO LOCATE FROM AIR

SAFETY



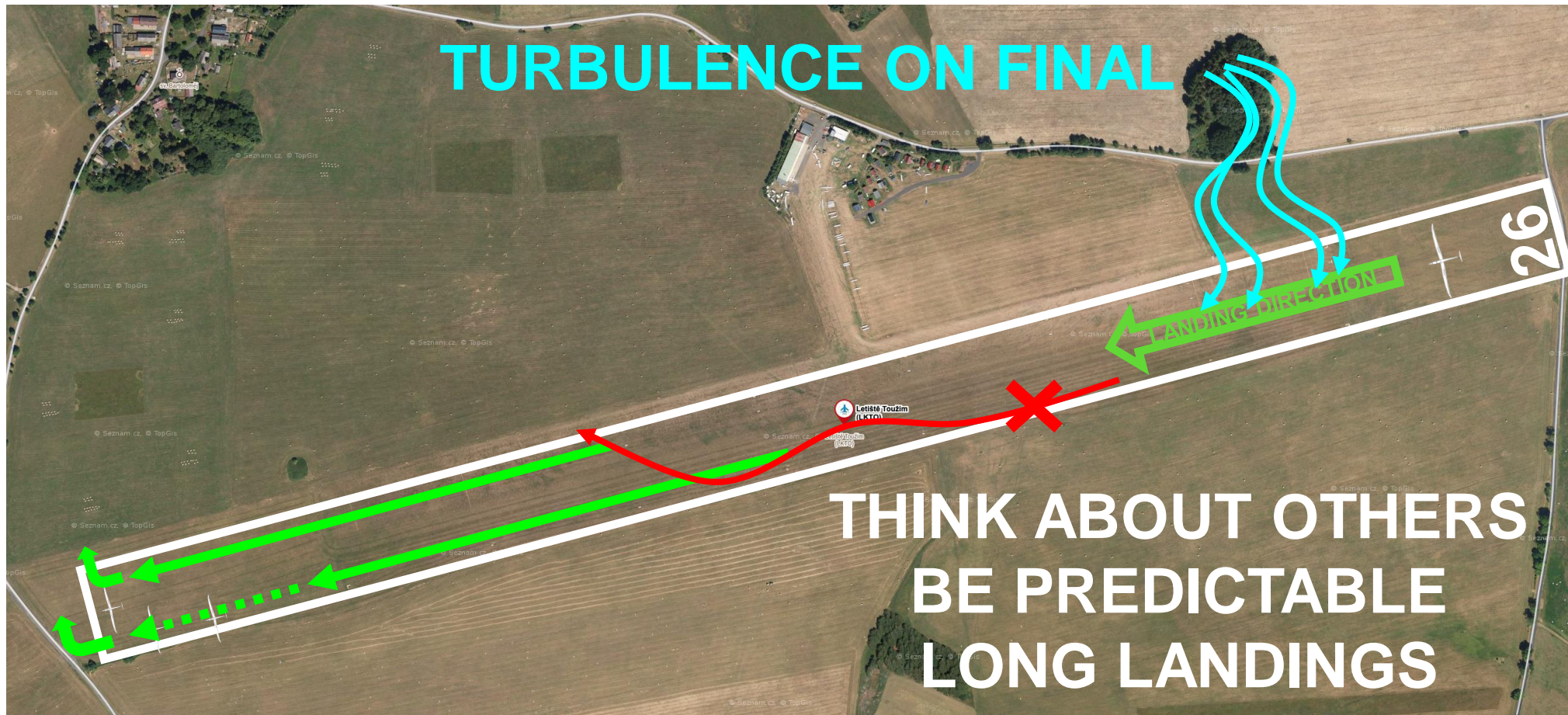
- ARRIVALS



THE AIRFIELD CAN BE HARD TO LOCATE FROM AIR

SAFETY

- LANDINGS



QUESTIONS?



CZECH **GLIDING** CHAMPIONSHIP

TOUŽIM | 2024

